

Join/renew  
**LINK IS OPEN**

**There are new  
things in the  
works for  
everyone!**



**Monthly Maker's  
Challenge**

See pages 9-10 for a  
recap of last month's  
meet up and to see all  
the monthly themes  
for 2022!

As we hand-off the leadership of MASSC to the new team—we stopped to ask our incoming and outgoing presidents a couple of questions to get their perspectives on how they feel it went and how they plan to go forward.

# JANUARY 2022

Incoming president **Erin Proctor**

**Q: WHAT ARE YOUR GOALS FOR THE ORGANIZATION?**

**A:** My biggest goal and focus for 2022 is bringing our members exciting and fulfilling events. We will see programming that includes the big popular favorites like Demo Day, but I also hope to collaborate with our Programs Team to bring some new experiences into the mix.

Part of achieving this goal will be to do more outreach to our members throughout the year to ask questions and find out what types of things they feel would be most beneficial to them.

I want to get our members more involved and make sure everybody has a chance to tell us what we can do for them.

Outgoing president **Angelina Smith**

**Q: WHAT WERE YOUR GOALS FOR THE ORGANIZATION?**

**A:** My goal for MASSC when I joined the board initially was to improve our community relations and to re-assess how we chose to further our mission.

When I first joined the board as Vice President/Program Chair, I saw right away that we had some infrastructure that needed improvement, such as our website with member directory, our video library, and our programming schedule. I made it my goal to get the website updated with more useful features, get our video library digitized to make videos more accessible, and to create some fresh programming like the Downtown Jewelry District Tour!

Continued on the next page...



**Q:** Tell us about your accomplishments thus far, and what you want to accomplish during your upcoming presidency.

**A:** I think the biggest accomplishment recently would be the work Angelina and I have done to keep things going despite the pandemic by moving all of our programming online. It was new, it was hard, and even frustrating at times, and we found ourselves having to learn A LOT of new technical skills really quickly, but I am really proud that we were able to keep our community together and continue to learn and share

with each other even when we couldn't physically be in the same room! Thanks to Zoom and Angelina's video skills and industry connections, we were able to present the Jewelry District Tour online which enabled us to invite guests/presenters from all over the country. We were able to give everyone a virtual front row seat at Demo Day by broadcasting demos via Zoom and again, this enabled people to attend no matter where they lived! We started a new free monthly event called the Makers Challenge where anybody who wants to join can make and share a piece based on a monthly theme. We've seen some amazing work and learned a ton of tips and tricks at these intimate Zoom get-togethers, and they have really helped us to keep

**Q:** What do you feel will be some of the difficulties/challenges that you have facing us during your presidency?

**A:** Unfortunately, the pandemic is still a thing and is something we're going to have to plan carefully around. I know a lot of us aren't super comfortable or happy with the online format for our programming, but luckily most of us are ok with it, and I am really going to work towards making it as accessible to our members as possible because it looks like we will be doing most of our events online again this year. We are hoping to bring some smaller in-person events into fruition later in the year, but we will just have to play it by ear and remain flexible and able to pivot to wherever the current climate points us. That makes planning events really difficult because so much has to go into planning an in-person event. Different counties have different Covid protocols and these things seem to be changing all the time. It's going to be a challenge to navigate, but rest assured that we will have a lot of fantastic online programming for our members to enjoy no matter what!



**Q:** Tell us about your accomplishments that occurred during your term.

**A:** I think what I will be most-remembered for is the Jewelry District Tour. Several years back I had this idea to bring members into the heart of DTLA to walk around and meet some of my favorite vendors, with the help of friend/tour guides Marta Bialy and Kristina Grace. The event grew for five years up until 2020 when it wasn't safe to conduct this event due to the pandemic. In 2021 I was able to go around with my camera and bring this event to our members virtually, inviting vendors and viewers from all over the country to participate live via Zoom.

**Q:** What were some of the difficulties/challenges that you had to overcome during your presidency?

**A:** In my four years as president I came up against some pretty difficult circumstances. We had a website that was out of date and we needed an emergency overhaul for people to be able to renew their membership and sign up for things like the Jewelry Challenge. I enlisted the help of my good friend and web designer Steve Torres to create for us a website that had features like a members directory where everybody could opt-in to share their chosen information. I am really happy to have been able to streamline how membership is processed. Up until last year everything was entered manually when a new member joined, which put an unnecessary burden on our volunteers. Now these tasks are automated, making it easier for a volunteer to come in, manage, and oversee the operation. Tigre Sheets has been doing this job beautifully and flawlessly since that time.

Another role I felt needed some support was that of our Vice President/Program Chair. I motioned to the board and to our membership that we change our bylaws to split that position into two seats to help spread the work out making it an easier job. Now we have the Vice President of Operations role to help out!



**Q:** As we go into 2022, what do both of you feel is most important for strengthening our organization?

**A:** I think the most important thing is to bring value to our members. If I pay for a membership, I expect to get something worthwhile out of it. I know what *I* want out of *my* membership, but I want to make sure we're thinking about what everybody else wants, too. It's really important to me to find out what our members desires and expectations are. I hope that members will reach out to me and the board, attend some board

meetings, and answer surveys when they come. I am creating and sending these things out personally so I am hoping that members will participate and talk to us so that we can be sure that we're providing them with a valuable membership.



The biggest hurdle during the past 2 years has of course been the unexpected transition to online-only programming during the pandemic. The silver lining of this challenging time is that it has helped to move our organization into the 21st century. Luckily we had some infrastructure already set up thanks to Stella Schloss urging us to take our board meetings online via ZOOM a few years back. We also had an online video library I set up in 2018 ready to be filled so we could immediately create a new benefit for our members who stayed with us through the pandemic. Erin Proctor stepped in once

**Q:** As we go into 2022, what do both of you feel is most important for strengthening our organization?

**A:** As we move into not only a new year but a new term with Erin Proctor as President, I think my strengths as VP of Administration are most useful behind the scenes, streamlining the various volunteer positions, helping to make other volunteering jobs easier, providing supplemental support where needed. Erin has a vision for us that I support and that's listening to members and what our membership wants to see.

## SURVEY TIME!

4 Simple Questions.  
Your answers are so IMPORTANT.

This survey is going to help us plan our events for the year. Be honest. Be anonymous if you choose, or leave your contact info if you'd like me to reach out to you so we can chat more in-depth.

This will be the first of several member surveys I'll be sending to you guys and I really hope to see everybody chiming in.

I'll always try to keep them short and sweet but we can't run this organization without your voice, participation and support.  
Thanks! -Erin Proctor, MASSC President

## EVENTS & PROGRAMMING SURVEY: HELP SET THE STAGE FOR 2022

[CLICK HERE TO TAKE THE SURVEY](#)



## ASK BETSY! by Betsy Manheimer

**Q:** I love texture plates! What's the best way to use them?

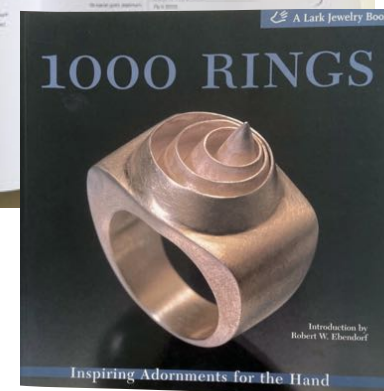
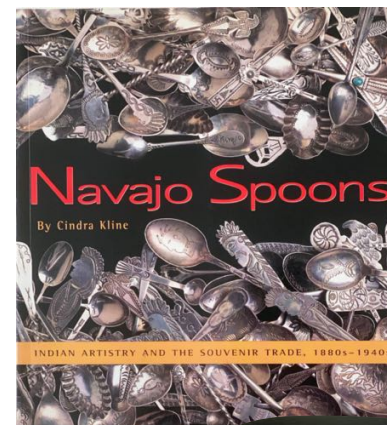
**A:** Texture plates, also known as embossing plates or pattern plates, are metal plates that have designs carved into them that can be used to transfer patterns onto metal. They are generally offered in steel or brass and usually about 3-4" wide and about 6" long. The plate is patterned by etching, engraving or carving with burs, files or other tools to create a base on which to place your metal for transfer.

- While there are many brass plates available, I find that the steel ones are superior. You can get a number of passes with the brass but, due to its softness, it will deteriorate more quickly than a steel plate will.
- These plates are generally used with a rolling mill. They are often advertised as being appropriate for a hydraulic press, but most of the resources on this process show them as being used with a mill. As all my experience with them is with a rolling mill or with hammers, I would suggest using either one of these. Once a plate is used with a rolling mill, do not use it in a hydraulic press as it will develop a curvature that, while it's still fine to use in a mill, it could create a problem in a press
- The steel plates are mild steel so they are softer than your rolling mill rollers and should not be a problem rolling them through (I haven't ever had a problem), but if you're concerned about this you can place a piece of manila folder or some copper under the steel before you roll it.
- It is best to use annealed metal as your target piece as you will get a better transfer, and I have found that using a folded paper towel or some heavy paper on top of your target piece gives your metal a little more "give."
- You can also hammer the texture onto your metal. Some artists use lead fishing weights or folded aluminum foil on top of the target metal and use a standard hammer. Place the plate on your work surface, then your metal, then the lead or foil, and hammer away. If you use lead, please be sure to wear gloves as you shouldn't really have too much contact with the lead. If you don't want to use the lead or foil, you can place your metal on the plate and use a Delrin or plastic hammer which will not mar or distort your metal. Make sure to tape your metal to the plate so you don't damage your fingers with the hammer (don't ask me how I know).
- You can get some beautiful pieces with these texture plates, and there are numerous vendors who sell them. Rio Grande carries a lot of them, and a Google or Etsy search will give you a great number of other vendors and countless designs to choose from. You can also learn to make your own, which I will address in a future column.

In the meantime, send your questions and/or comments [askmassc@gmail.com](mailto:askmassc@gmail.com)

## Looking For Inspiration

Some references for the Monthly Makers challenges, to get your creative juices flowing.



# JANUARY 2022

Black/Bold = MASSC Sponsored Event

SUNDAY	MONDAY	TUESDAY	WEDNESDAY	THURSDAY	FRIDAY	SATURDAY
						1
2	3	4	5	6	7	8
9	10 Metalwerx Intro to Creative Metal Forming Cynthia Eid 10 am-4:30 pm EST	11	12 Metalwerx Intro to Creative Metal Forming Cynthia Eid 10 am-4:30 pm EST	13 Silvera Jewelry School Stone Setting: Tube, Flush and Prong 2:00-5:00 pm PT	14 Metalwerx Intro to Creative Metal Forming Cynthia Eid 10 am-4:30 pm EST	15
16 Adam's Forge Black Cat Bottle Opener 4pm-8pm PT	17 Halstead Jewelry Business Forum Free digital conference Mon-Fri	18 Halstead Jewelry Business Forum Free digital conference Mon-Fri	19 Quartzsite Show PowWow Gem Show Jan 19-23, 2022 Quartzsite Improvement Assoc	20 Silvera Jewelry School Stone Setting: Tube, Flush and Prong 2:00-5:00 pm PT	21 Quartzsite Show Tyson Wells Sell-A-Rama Jan 21-30, 2022 Tyson Wells Enterprises Inc.	22 Silvera Jewelry School American Modernist Jewelry 10:00-5:00 pm PT also Sunday 23rd
23 MONTHLY MAKERS CHALLENGE 10 AM PT Words of Wisdom	24	25	26	27 Silvera Jewelry School Stone Setting: Tube, Flush and Prong 2:00-5:00 pm PT	28	29
30 Adam's Forge Steel Rose 9am-3pm PT	31					

# FEBRUARY 2022

Black/Bold = MASSC Sponsored Event

SUNDAY	MONDAY	TUESDAY	WEDNESDAY	THURSDAY	FRIDAY	SATURDAY
		1 Silvera Jewelry School Ingots, Forging and Hollow Forms 10:00-1:00 pm PT	2	3	4 Silvera Jewelry School So Riveting 10:00-5:00 pm PT	5 MASSC Board Meeting 10 AM PT
6	7	8 Silvera Jewelry School Ingots, Forging and Hollow Forms 10:00-1:00 pm PT	9	10 Tucson Gem and Mineral Show Feb 10-13, 2022 Tucson Convention Center	11 Quartzsite Show Gold Show Feb 11-13, 2022 Quartzsite Improvement Assoc	12
13 MASSC Box Workshop Pt. 1 Via Zoom w/Angelina 10 AM PT	14	15 Silvera Jewelry School Ingots, Forging and Hollow Forms 10:00-1:00 pm PT	16	17	18	19
20 MASSC Box Workshop Pt. 2 Silver Locket Via Zoom w/Angelina 10 AM PT	21	22 Silvera Jewelry School Ingots, Forging and Hollow Forms 10:00-1:00 pm PT	23	24	25	26 Little Metal Foxes Etch in a Bag Julia Lowther 2:00-4:00 pm PDT
27 MONTHLY MAKERS CHALLENGE 10 AM PT Blooms	28					

# MARCH 2022

Black/Bold = MASSC Sponsored Event

SUNDAY	MONDAY	TUESDAY	WEDNESDAY	THURSDAY	FRIDAY	SATURDAY
		<b>1</b> Metalwerx Stone Carving at the Bench Ryan Gardner 10 am-1:00 pm EST	<b>2</b>	<b>3</b> Metalwerx Stone Carving at the Bench Ryan Gardner 10 am-1:00 pm EST	<b>4</b>	<b>5</b> MASSC Board Meeting 10 AM PT
<b>6</b>	<b>7</b>	<b>8</b>	<b>9</b>	<b>10</b>	<b>11</b>	<b>12</b>
<b>13</b>	<b>14</b> Metalwerx Creative Coaching: Jewelry Design-Fing Your Voice Paulette Werger 7:00-8:00 pm EST	<b>15</b>	<b>16</b>	<b>17</b>	<b>18</b>	<b>19</b>
<b>20</b> MONTHLY MAKERS CHALLENGE 10 AM PT Utensils	<b>21</b>	<b>22</b>	<b>23</b>	<b>24</b>	<b>25</b> Silvera Jewelry School Where's The Clasp? w/ Alison Antelman 10:00-5:00 pm PT	<b>26</b> Silvera Jewelry School Where's The Clasp? w/ Alison Antelman 10:00-5:00 pm PT
<b>27</b> Silvera Jewelry School Where's The Clasp? w/ Alison Antelman 10:00-5:00 pm PT	<b>28</b>	<b>29</b>	<b>30</b>	<b>31</b>		

Betty Helen Longhi work is currently being featured at [shop.piedmontcraftsmen.org](http://shop.piedmontcraftsmen.org) as she steps into retirement.



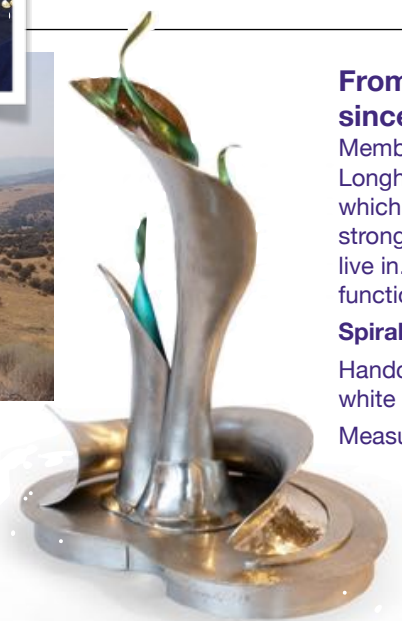
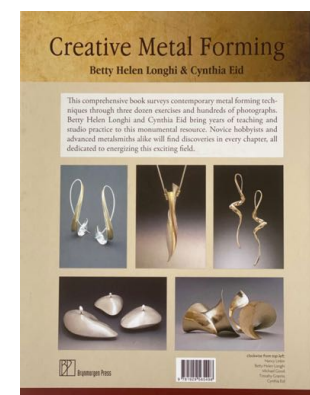
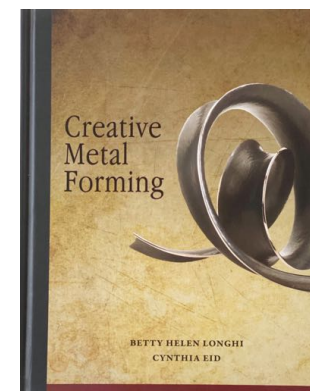
**The Hammer Queen – Betty Helen Longhi** is one of the most accomplished metalsmiths of our time, and her contributions to the medium are everlasting. A scion of Heikki Seppä, she has eclipsed him by generously sharing her knowledge with hundreds of students for decades. Her book, *Creative Metal Forming*, will inspire future generations to continue the work of hand and hammer.

Her masterful finesse with hammers is truly a joy to watch. Metal flows and forms itself to her will and vision. She manipulates the materials with ease, making her tools an extension of her self, the Hammer Queen. Her work has distilled the essence and connection to our verdant world, especially with her Zen Garden series. The lines and forms she composes for each piece pull us into her macrocosm, reminiscent of nature, innovative and not derivative. She thoughtfully utilizes the balance of shape and interaction of light upon it, which creates a beautiful dimension to her work.

I have known her for three decades. Initially bonded by an art form we both love, we have experienced personal highs and devastating lows together. Our relationship has tremendous depth, in which Betty has enriched my professional life with her metalsmithing skills and creative sensibility. I have assisted her in the studio intermittently for 23 years, fabricating production jewelry. We have participated in craft fairs, exhibitions, and taught workshops together. We have traveled from the golden hills of Northern California to the blue ridge mountains of Appalachia. My company NC Black even designed a hammer, the “Bad Betty”, to honor her. It has been a bountiful artistic adventure we have shared with each other.

Her legacy will not only be her work, but the multitude of students and handful of apprentices who have benefited from her largesse and expertise, and continue to carry on the traditions of shell forming metal.

Intro written by Andrea Harvin-Kennington



**From her exhibit at [shop.piedmontcraftsmen.org](http://shop.piedmontcraftsmen.org) Lexington, NC, exhibiting since 1976.** Presenting a retrospective of jewelry and sculptures by Piedmont Craftsmen Member and Master Metalsmith, Betty Helen Longhi. There are two ways in which Betty Helen Longhi hopes her work will speak to people. The first is the expression of beauty and the way in which beauty can uplift the human spirit. The second comes from her study of Buddhism and her strong wish to create work that will give an aura of peace as an antidote to the troubled times we live in. She is pursuing this through her most recent pieces, miniature Zen gardens, intended to function as objects for meditation.

### **Spiral Journey**

Handcrafted pewter and niobium sculpture by master metalsmith Betty Helen Longhi. Niobium is a white metal similar in hardness to titanium and more hypoallergenic than sterling silver.

Measures 9" long x 7" wide x 12" tall



## December's Monthly Makers Challenge – Ornaments

This is the time of the year that the much anticipated holiday party and annual ornament exchange (or the anguish of losing a favored ornament to someone else) goes on. We have a sampling of the ornaments that went to the Holiday Party this year, along with a few others from the Monthly Makers Challenge. Thanks to everyone who participated and shared.



**Above: Bill Gallagher**  
Made 3 fun ornaments all in sterling silver and the bird with a copper piece in its mouth.



**Joy ornament from MaryAnn Groark**



**Copper wire woven with beads from Patty Tait**



**Jean Vormelker**  
enameled North Pole ornament

A new year has begun and that means a new monthly challenge list! This is NOT a competition, but rather a chance to challenge ones self with a new theme every month. This past year of projects has given us a time to socialize with others, but more importantly for our craft, it has allowed us to share our challenges, observations, tools and techniques with each other. This is a time to challenge *ourselves*, and it's a great way for all of us to learn from each other, no matter what your skill level is. We encourage everyone to join us! All skill levels are welcome and you can attend just to watch and listen, or to chime in and ask questions about a project you are working on and to show us your progress. We have listed the monthly themes below so that you can get inspired by a theme that resonates with you, allowing time for the design and creative process. Still stumped? No inspiration? Look no further than Lapidary Journal's Jewelry Artist magazine for a project and adapt it to the theme-all the instructions and supply list is there. And at the day of the event, we are here to answer any questions on places you got stuck.

Please join us, share a project, listen in or add to the conversation, add a tool or technique that would have helped in the execution of the project. This is a free and safe space for everyone who'd like to join us. If you have suggestions as to how you would like this to be or something to add to the process please let us know. Your participation and input is valuable to make this fun for all. Here's to a very creative 2022!

## January

### Inspirational Words/or Messages

Starting the new year with a fresh new perspective, with words to live by or to inspire oneself. We usually start the new year with resolutions. Use your words to create something meaningful. Stamping, engraving, piercing, carving wax, etching...there are so many ways to get your message out there.

## February

### Blooms

A month we often think of flowers—so let's create our own. Cut them, shape them, stone set them, enamel them, and decorate them. Create a bouquet or a single bloom, or use a floral pattern as an element in your design. We can't wait to see your creations!

## March

### Utensils

Always wanted to make a spoon? This is your time to show off your metal skills at the table. Cutting, dabbing, shaping, decorating...there are so many different ways to go. We are really looking forward to seeing what unique and useful utensils you can create.

## April

### Miniatures

What was once large is now small. Have some fun with making things tiny. Does changing the scale of an object create its own challenge? Let us know, anything goes. Go big, but think small!

## May

### Natural Materials

Let's combine different organic materials together, metal and wood, metal and stones, use these materials to envision something from the natural world. What challenges do you face in setting the object and how do you stabilize fragile objects?

## June

### Weaving/Stitching

This often makes us think of chains, but there are so many directions that you can go: cold connections, woven "fabric" embellishments, mesh screens, 3-D objects, baskets or... This is going to be a very interesting project.

## July

### "a secret" (or what's hidden inside)

Boxes, Lockets, anything can contain a hidden item or a surprise. What about hidden springs that activate once moved or opened? Can 1 item become 2 different items when taken apart? Hollow forms is something we have done before—but this takes it to a new level.

## August

### Five tool challenge

To create the object of your choice, you can only use the 5 tools highlighted below. We are so obsessed with having the right tool for each action that we create. This challenge takes us back to basics when we first started with a few simple tools: a **foredom** (includes all the bits), **pliers** (basic only), **hammer**, **anvil or bench block**, and **saw frame**. A **bench pin** is part of the bench so can be used, along with your **solder station**. This is a tough one! A lot of planning will be required, and we'll practice thinking through the project from beginning to end, and resisting the temptation to grab that favorite specialty tool! Just the basics!

## September

### Ancient technique or historical influence

We all seem to look to the past for style and inspiration, and we all have our favorite places in time. Will you go centuries past, or more contemporary with Art Deco or Mid-Century Modern? With so many directions to go, it will be fun to see what period or technique everyone chooses.

## October

### Kinetics/Motion

Get some action into your pieces, make it do something! Will you have a piece hanging by a wire, jump ring or pop open with a spring? Will your piece spin or twirl around your finger? These type of pieces are always challenging to engineer and balance properly but once done they are truly amazing.

## November

### Color

Coloring metal is an art unto itself, adding patinas can really change up a piece, but what can you do differently with color to add interest to your piece? Is it titanium or niobium? Married metals, plastics, colored pencils, colored gem stones and embedded resins... not to mention the multitude of products out there to add color to our pieces such as enameling, oxidation, epoxies, Corlite and wood to name a few.

## December

### Ornaments

It's time to decorate for the season! We celebrate different things in different ways but we all have MAKING in common! Make a bauble to hang or display that celebrates your fav holiday or make a piece of winter decor!



# Extras of Interest & Member Perks

## Schools & Organizations

### Adams Forge

In-person blacksmithing classes

<https://adamsforge.org>

Los Angeles, CA

### GRS Tools and Training Facility

Professional and beginning stone setting, engraving, inlay and sculpting metal classes

<https://grs.com/facility/> <https://grs.com/cost/>

### Idyllwild Arts

Summer Adult Metals Week Program

Summer Native American Program

[idyllwildarts.org](http://idyllwildarts.org)

951-359-2171

Idyllwild, CA

### Little Metal Foxes

Interactive online classes

[info@littlemetalfoxes.com](mailto:info@littlemetalfoxes.com)

Seattle, WA

### Metalwerx

Classes both online and in-person

[info@Metalwerx.com](mailto:info@Metalwerx.com)

781-891-3854

Waltham, MA

### Silvera Jewelry School

Free lectures monthly, Zoom & in-person classes

[silverajewelry.com](http://silverajewelry.com)

510-868-4908

Berkeley, CA

## Classes by MASSC members:

### Nohline L'Ecuyer

The Loft Jewelry Studio

<https://www.theloftjewelrystudio.com>

### Diane Weimer

Year-round classes from world class artists

<https://dianeweimer.com/workshops>

### Erin Proctor

Private classes in a variety of techniques

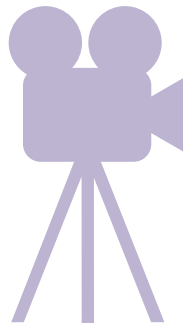
<http://www.saturn5studio.com>

## Exclusive Member Video Library!

Check out the MASSC video collection with short clips available to all highlighting some of the events and classes we've held throughout the year. **Current members** have password protected access to full videos that include classes, demos, the Jewelry District Tour, and Demo Day (each demo is its own separate video).

[Click to visit the Video Library](#)

New Additions:



**2021 Jewelry Vendor Tour & Demo Day Now Available!!**

## Join or Renew Membership:

[Click Here](#)

### Become a member

If you're joining us for the first time, then hooray! We can't wait to share all of our exciting events with you this year!

Learn all about your member benefits and register here!

Membership is good from the date you register until December 31, 2021.

### Here are some reasons to think about joining:

- Receive Members Only access to Video Library!
- Special pricing on MASSC sponsored workshops & access to Members Only classes and events like the Jewelry District Vendor Tour (online this year), competitions like the Metals Challenge, and more!

### Membership Dues for 2022

**Individual** \$50

**Dual** \$75

**Student** \$30

Consider sponsoring a student membership!

## Resources

Jewelry/Studio Organization-Ruth Kaplan

## Over the holidays I spent a day cleaning and organizing my jewelry that I wear

it was so bad that I had not put any of it on in so long. So now it is clean and I need to store it with easy access to wear it.

So I went to the site that I used to organize my stones for some ideas.



Don't know if I need one or two trays. But I still have a lot more cleaning to do.  
**Please send us your storage ideas.**

## MASSC Board Members

**President: Erin Proctor**  
[massc.president@gmail.com](mailto:massc.president@gmail.com)

**Vice President, Program Chair: Seat is open**

**Vice President, Operations: Angelina Smith**  
[massc.vp.ops@gmail.com](mailto:massc.vp.ops@gmail.com)

**Secretary: Lori Hooks**  
[massc.secretary@gmail.com](mailto:massc.secretary@gmail.com)

**Treasurer: Stella Schloss**  
[massc.treasurer@gmail.com](mailto:massc.treasurer@gmail.com)

## Members At Large

**2Roses, MASSC Social Media**  
[social.massc@gmail.com](mailto:social.massc@gmail.com)

**Ruth Kaplan, Newsletter Editor**  
[massc.editor@gmail.com](mailto:massc.editor@gmail.com)

**Virginia Hyatt, Newsletter Team**  
[massc.editor@gmail.com](mailto:massc.editor@gmail.com)

## Other MASSC Volunteers:

**Membership Chair: Tigre Sheets**  
[join.massc@gmail.com](mailto:join.massc@gmail.com)

**Fundraising Chair: Kiki Gerardo**  
[kikig@pacbell.net](mailto:kikig@pacbell.net)

## Contributors

Bill Gallagher  
MaryAnn Groark  
Virginia (Ginny) Hyatt  
Ruth Kaplan  
Andrea Harvin-Kennington  
Betsy Manheimer  
Erin Proctor  
Angelina Smith  
Patty Tait  
Jean Vormelker

## Thank you to our sponsors

**Tim McCreight, Brynmorgan Press**  
<https://www.brynmorgen.com>

**All Craft USA**  
<https://www.allcraftusa.com>

**A to Z Jewelry Tools**  
<https://atoztoolsonline.com>

**Fire Mountain Gems**  
<https://www.firemountaingems.com>

**NC Black**  
<https://www.ncblack.com>

**Rio Grande Jewelry**  
<https://www.riogrande.com>

**Sheltech**  
[www.sheltech.net](http://www.sheltech.net)

**Trish McAleer**  
<http://www.metalcorrugation.com>

## Follow MASSC:



**@metalartsociety**



**The Metal Arts Society**  
**of Southern California**

## Be a part of a team!

We are creating teams to work with each of the elected Board positions as some of the assigned duties are overwhelming for one individual. We have decided that a support system needs to be put in place to brainstorm ideas, organize zoom meetings, select teaching topics and monthly activities. We don't want to skip a beat going forward for this into next year. We need your experience to help us set up a stronger, inclusive organization.

Please let us know if you have experience in video editing, book keeping, communications, programming, marketing and outreach—we really need to hear from our members because we have learned from experience it does take a village to move things forward.

Contact: [massc.president@gmail.com](mailto:massc.president@gmail.com)

## Any member can contribute to this newsletter:

- Always looking for your tips and or techniques in any of your process to creating your pieces.
- Photos of your work can be featured in our MASSC Member Gallery. For that—looking for 3 to 4 photos of a collection that works together.
- If you have any questions, reach out and we can help you:

[massc.editor@gmail.com](mailto:massc.editor@gmail.com)