

# SEPTEMBER 2021 Newsletter

---

## IMPORTANT UPCOMING ELECTIONS

IT IS THAT TIME!  
PLEASE SEE PAGE 2  
FOR ALL THE  
ELECTION DETAILS



**SAVE THE DATE**  
**GENERAL**  
**MEMBERSHIP**  
**MEETING**  
**OCTOBER 2, 2021**  
**AT 2:00 PM**

# MASSCONLINE.COM

---



## **DEMO DAY** **OCTOBER 10, 2021**

Once again, we present a day of professional technique demonstrations live via Zoom! There's going to be enamel. We're going to get experimental with scrap and direct casting methods. You'll bask in the delights of corrugation, granulation, and MORE!

HEAD DOWN TO PAGE 10 FOR  
DETAILS OF THE DAYS EVENTS.

# TIMELINE & PROCEDURES FOR MASSC'S UPCOMING ELECTIONS

## How Your Organization Operates

MASSC is an all-volunteer non-profit 501(c) 3 organization. Our membership year begins January 1 and runs through December 31 and functions in accordance with the Bylaws established for the conduct of MASSC operation.

The elected volunteer positions are for a two-year term with this next term beginning January 1 through December. Nominations are solicited from the general membership with an **October 23rd** deadline for nominations. A ballot with names of those running for office will then be created and submitted to the general membership in good standing for voting to be completed by deadline established (**Voting starts November 1st and ends November 26th**). The new officers will take their position January 1st.



If you have any questions, feel free to email:

[massc.editor@gmail.com](mailto:massc.editor@gmail.com)

## Timeline of Procedure

### OCTOBER:

#### General Membership Meeting 10/2 at 2p

The Nominating Committee shall issue notice to the general membership of all offices to be elected for Board of Directors, respective responsibilities of these positions, and the election time line. The notice shall indicate that members may nominate themselves or other candidates to run for office, the deadline their submission must be received, and written confirmation of the candidate's willingness to serve if elected.

The Nominating Committee will name one or more candidates for each elective office and will have the written confirmation of the candidate's willingness to serve if elected. The Chairperson of the Nominating Committee shall notify the Board of Directors of the slate of candidates.

### NOVEMBER:

#### Ballots for the election

The election of Board of Director and Officers shall be held by secret emailed ballot on November first (1st) to conclude before December first (1st). The nominating committee shall tally the returned voted ballots. The elected offices shall be determined by simple majority of the returned voted ballots.

### DECEMBER:

#### Announcing the election results

The Chairperson shall relay the election results to the Board of Directors, the candidates, and the General Membership via email and newsletter.

**POSITION DESCRIPTIONS ON PAGE 7**

## ASK BETSY!

by Betsy Manheimer

**Q:** Do I need to use “reticulation silver” or “80/20 silver” to reticulate silver?

**A:** Reticulation is one of those processes where there are almost as many opinions on how to do it as there are artists and teachers using the technique. Some makers like the 80/20 reticulation alloy, some prefer or just tend to use standard 92.5 sterling, and others make their own alloy.

**Even with all these different opinions, there are some principles that remain the same:**

- ◆ Heat the silver to annealing temperature. Most likely at first it will turn black as the copper oxides rise to the surface.
- ◆ Using hot, fresh pickle, pickle the piece for a number of minutes.
- ◆ Brass brush the pickled metal to remove the remaining surface oxides.
- ◆ Repeat the process until the silver remains white. This is a fine silver coating which is what you are seeking. It can take anywhere from 4-5 to 10-12 cycles to do this. When you reach this stage, pickle the metal but you do not have to brass brush it.
- ◆ Using a sharp, hot flame, play the flame over the metal. The metal will start looking glossy—when you get to this point, do not keep the flame in the same place for too long or you will melt it.
- ◆ Keep moving the flame across the metal and you should start to see ridges and valleys form. Once these have formed over the entire surface of the metal, you’re done! Pickle and scrub, and you will have your sheet of reticulated silver.

While some people claim they can create specific patterns, most agree that it is a serendipitous technique and will be different every time. It’s best to use a sheet larger than you need for your work so you can pick and choose the areas you like most for your finished piece.

You can also reticulate other metals such as certain gold alloys and brass. **DO NOT**, however, try to reticulate brass in any area that is not very, very, very well ventilated. Metal fume fever is a real thing—I have been “fumed” (once!), and, while it did not require medical attention, it was very uncomfortable and I lost an afternoon waiting for it to subside.

If you want to try reticulation, there are numerous resources available both in books and online (YouTube has numerous demonstrations) so you can look further into the technique. If you have specific questions, I’ll be glad to help.

Keep making great stuff, and send your questions to [askmassc@gmail.com](mailto:askmassc@gmail.com)



## Tools & Tricks

Here’s a great tool tip from member **Bill Gallagher!**

**GARY’S CLAMP** exclusive only to Rio Grande Item # 115000

Invented by Gary Hutchinson and manufactured by Swanstrom Tools, this unique clamp made from machined aluminum enables you to securely hold and manipulate stampings made with disc cutters, or any other flat sheet you wish to hold. By placing two stampings in the clamp you can simultaneously saw out identical parts. The clamp has four movable fingers for securely holding the stamping, and a target plate for positioning.

Its ergonomic design reduces stress on hands and fingers when manipulating small parts for various operations such as sawing. Its round shape and four movable clamping fingers make it easy to rotate virtually any shape while performing work. The steel clamping screws incorporate a Delrin washer to prevent marring of the piece when it is clamped into place.

The Delrin target plate serves to provide initial centering of the disc within the clamp. The plate does not have a crosshair or concentric rings because the design and function of the human eye can discern center position in relation to edges when objects are not too large. Having several crosshairs or concentric circles tends to confuse the eyes unless they highly contrast each other. If you desire, you can use a felt tipped marker to make your own erasable lines on the Delrin plate.



### Specifications:

Brand : Swanstrom

Dimensions : OD: 2-1/2" ID: 1-3/4"

Thickness: 5/16"

Model or style no. : Gary's Clamp

Country of origin : United States

### Additional Specifications:

Maximum disc size: 36mm diameter

Max gauge: 5mm thick, based on height of opening on screws

# SEPTEMBER 2021

Black/Bold = MASSC Sponsored Event

Sunday	Monday	Tuesday	Wednesday	Thursday	Friday	Saturday
			1	2	3	4
5	6	7	8	9	10	11
12	13 Bowers Museum Miao: Masters of Silver	14 Anneville Studio Twisting Mokume 14-15 both days	15 Silvera Jewelry School Anticlastic Jewelry Sept 15, 22, 29 2-5 pm PT	16	17	18
19	20	21 Metalwerx Carving Wood Earrings w/wire inlay 6-8 pm PT	22	23 Metalwerx Carving Wood Earrings w/wire inlay 6-8 pm PT	24	25 BOX WORKSHOP 10 AM RSVP by September 17 See page 11 for complete details
26 MONTHLY MAKERS CHALLENGE 10 AM Inlay	27	28	29	30		

# OCTOBER 2021

Black/Bold = MASSC Sponsored Event

SUNDAY	MONDAY	TUESDAY	WEDNESDAY	THURSDAY	FRIDAY	SATURDAY
					1	2 MASSC BOARD MEETING 10 AM  GENERAL MEMBERSHIP MEETING 2 PM
3	4 Silvera Jewelry School Steel and Gold Bette Barnett 10-12 pm PT	5 Silvera Jewelry School Steel and Gold Bette Barnett 10-12 pm PT	6 Silvera Jewelry School Steel and Gold Bette Barnett 10-12 pm PT	7 Silvera Jewelry School Steel and Gold Bette Barnett 10-12 pm PT	8	9
10 DEMO DAY 10-4 PM Full day of demonstrations and Q&As from artists	11	12	13	14	15	16
17	18	19	20	21	22	23 Silvera Jewelry School Brooch Back Mountings 10-5 pm PT also Sun, Oct 24, same time
24 MONTHLY MAKERS CHALLENGE 10 AM 31	25	26	27	28	29	30

# NOVEMBER 2021

Black/Bold = MASSC Sponsored Event

SUNDAY	MONDAY	TUESDAY	WEDNESDAY	THURSDAY	FRIDAY	SATURDAY
	1 BALLOTS OUT TO ALL MASSC MEMBERS  PLEASE VOTE	2	3	4	5	6 Metalwerx Tinkering with Wire Ellen Wieske 1-3 pm PT
7 Metalwerx Tinkering with Wire Ellen Wieske 1-3 pm PT	8	9	10	11	12 West Coast Gem, Mineral & Fossil Show Hilton Orange County Costa Mesa 10 am to 6 pm	13 MEMBER STUDIO TOUR 12-2 PM West Coast Gem, Mineral & Fossil Show
14 West Coast Gem, Mineral & Fossil Show Hilton Orange County Costa Mesa 10 am to 5 pm	15	16	17	18	19	20
21 MONTHLY MAKERS CHALLENGE 10 AM	22	23	24	25 HAPPY THANKSGIVING	26	27
28	29 Silvera Jewelry School Art Nouveau Jewelry 6-9 pm PT Mondays	30				



## Elected Positions and their Tasks

### Elected: President

The President is the public voice and face of the organization, and is the go-to point of contact for Board Members, Volunteers and Members. The President works closely with all Board Members to help oversee operations, delegate tasks and appoint Volunteers and necessary Committees, and they will follow up to ensure projects and tasks are being completed. The President is responsible for leading at least 4 Board Meetings per year as well as at least 1 General Membership Meeting per year.

#### You'd be a good candidate if:

- You are organized and have good communication and leadership skills
- You don't mind a little public speaking
- You enjoy being a part of a metal arts community, talking with people, hearing and relating ideas
- You have a strong desire to further MASSC's mission
- You have basic computer skills and are familiar with Zoom, Constant Contact, Gmail, Google Drive, Google Docs/Forms/Sheets, Paypal (or you're willing to learn)

### Elected: Vice President, Program Chair

The Vice President of Programs has their finger on the pulse of the membership, and is responsible for proposing and organizing workshops and other events throughout the year based on what would best serve our members and community. The VP/Programs also steps in when the President is unavailable.

#### You'd be a good candidate if:

- You have a strong desire to be more involved in your metal arts community by reaching out to and getting to know a variety of artists, instructors and venues
- You enjoy planning and organizing events
- You love meeting new people and collaborating on projects
- You are passionate about the organization's mission and have a strong desire to bring beneficial and educational events into fruition for our members
- You have basic computer skills and are familiar with (or are willing to learn and become proficient with...) Zoom, Gmail, Google Drive, Google Docs/Forms/Sheets, Paypal

TO NOMINATE SOMEONE  
OR TO MAYBE RUN FOR  
OFFICE YOURSELF  
[CLICK HERE!](#)

### Elected: Vice President, Operations

The VP of Operations is the VP of Program's right hand, assisting with the coordination of payments, correspondence, and paperwork associated with our events throughout year. They will work closely with the President and VP of Programs and help to ensure all i's are dotted and all t's are crossed so that events run smoothly from start to finish.

#### You're a good candidate if:

- You are organized and like to follow up and ensure tasks are completed
- You want to be more involved with the organization, but in more of a behind-the-scenes role rather than out in front having to do a lot of public speaking and such
- You are comfortable with Gmail, Paypal, Zoom, Constant Contact (or are willing to learn).

### Elected: Secretary

The Secretary attends all of the board meetings and takes clear detailed notes so that the board can refer back to them when needed. They also keep a record of the notes (Meeting Minutes) so that any Member can access them if requested, and they send a copy of the minutes from the previous meeting ahead of the next so that board members can be prepared.

#### You're a good candidate if:

- You're a good listener and note taker
- You have good editing skills and are able to decipher key points from idle chatter
- You're able to use Zoom, Gmail, GoogleDocs/GoogleDrive or are willing to learn
- You can commit to attending all board meetings (currently held via Zoom)

### Elected: Treasurer

The Treasurer keeps the board updated MASSC's bank balances, and often uses QuickBooks and Paypal. They oversee the collection of all dues and fees and issue refunds and checks to vendors. They keep an account of all receipts and expenses, make a financial report at least once annually that is made available to the full membership, and they ensure all debts/bills are paid in a timely manner. The Treasurer also works with the Membership Chair to verify membership status and files necessary federal/state documents as required to maintain the organization's non-profit status. This position will have professional support, don't worry!

#### You're a good candidate if:

- You're comfortable with or willing to learn using QuickBooks online
- You're comfortable with or can learn to use Paypal
- You can use/learn to use Excel, Numbers, or GoogleSheets
- BONUS: You have any experience with bookkeeping, accounting, and/or have held a treasurer position for a non-profit organization



NINA GIBSON



KIRSTEN DENBOW



RAMINTA JAUTOKAS



MARYANN GROAK

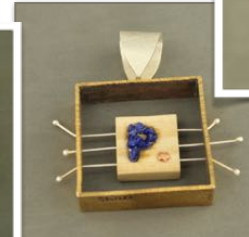
Grand Prize Winner: NINA GIBSON  
 First Place Winner: KIRSTEN DENBOW  
 Second Place Winner Tied: RAMINTA JAUTOKAS  
 Second Place Winner Tied: MARYANN GROAK  
 Honorable Mention Winner: ELISE PREISS



ELISE PREISS



MARLA ANDERSON



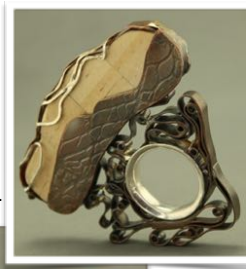
PETRA BLUM



KORRINE BROOKS



LYDIA HALL



**Reveal of the winners happened on August 21.** MASSC's yearly metal challenge had 27 pieces submitted, and 53 kits sold. Such an amazing turnout for 2021.

Participants listed in alphabetical order. Numbers indicate order they appear in the showcase video:  
 MARLA ANDERSON - 15  
 PETRA BLUM - 7  
 KORRINE BROOKS - 20  
 ADEOLA DAVIES-ALYELOJA - 4  
 KATHRE DUNN - 9  
 KATHLEEN FOCHTMAN-GAMBS - 3  
 BILL GALLAGHER - 21  
 LYDIA HALL - 6  
 LOMA HERF - 12  
 VIRGINIA HYATT - 22  
 APRIL KAWAOKA - 26  
 CHLOE KONO - 14  
 NOHLINE L'ECUYER - 17  
 DAVID RODRIGUEZ - 10  
 RUTH SHAPIRO - 23  
 TIGRE SHEETS - 5  
 NANCY JO STROUD - 25  
 MICHELLE MEESHKA VIDRO - 19  
 JEAN VORMELKER - 1  
 ANNA VOSBURG - 8  
 DIANE WEIMER - 2  
 HIRO WESTDORP - 18



ADEOLA DAVIES-ALYELOJA



KATHRE DUNN



KATHLEEN FOCHTMAN-GAMBS



BILL GALLAGHER



LOMA HERF



VIRGINIA HYATT



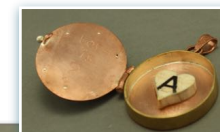
APRIL KAWAOKA



CHLOE KONO



NOHLINE L'ECUYER



DAVID RODRIGUEZ



# Metals Challenge

# Monthly Makers Challenge



RUTH SHAPIRO



NANCY JO STROUD



ANNA VOSBURG



TIGRE SHEETS



MICHELLE MEESKA VIDRO



JEAN VORMELKER

What outstanding work showcasing how talented all of our members are! Congratulations to all who participated! Please note: the numbers beside the participant names on the previous page indicate the order they appear in the showcase video. [CLICK TO VISIT VIDEO LIBRARY](#)



DIANE WEIMER

HIRO WESTDORF

August was such a fun and practical monthly challenge, as we all have piles of scrap metal, and various other materials used in past projects collecting dust. This challenge was to use that material to create something new.

We had some amazing pieces recreated into finished works.



Trudy Adler  
Cuddlefish Pendant set with Baltic Amber and freshwater pearls



Jean Vormelker  
Masquerade, fine silver and Garnet; Fish in its beginnings scraps layed out; Pair of circular pieces soon to become earrings? Who knows!



## Monthly Makers Challenge



### 2Roses

**Galaxy**, Brooch, Corlite, EpoxySculpt, Stainless Steel, 3 in Dia., This piece is the result of watching too many Science Fiction movies and a self-imposed challenge to use only the curved strips left over from another project.

**Leaf**, Brooch Corlite, Sterling Silver, EpoxySculpt, Stainless steel, 4 in L x 1.25 in W. This piece was a demonstration for an upcoming workshop on bezel techniques for Corlite. The piece utilizes a simple open back 14 guage wire form to define the leaf shape and support the body.

**Water Makes the World Go Round**, Brooch, Corlite, EpoxySculpt, Stainless steel. 4 in L x 1.75 in W x 1 in D. This piece is one of several that were made for an exhibition at the Society of Arts and Craft relating to environmental issues.

Photos: John Lemieux Rose.



2 Roses

### Erin Proctor

**Water Casting**, scrap silver poured into a bucket of water, creating a very fluid piece. Worn as a pendant



### Virginia Hyatt

**Linked Bracelet**, all scrap silver, soldered and fused, set with coral and lapis.



Virginia Hyatt

## Demo Day – A Full day of events

### PRESENTER LINE-UP:

**TRISH MCLAEER:**  
**CORRUGATION**

**DAVID FRED:**  
**GRANULATION**

**ERIN PROCTOR:**  
**EXPERIMENTS IN DIRECT CASTING**

**KATHLEEN FOCHTMAN-GAMBS:**  
**ENAMELING BASICS W/ROLLED PENNIES**

**NC BLACK:**  
**METAL FORMING & MALLETS**

### FEATURING ANOTHER EXCITING ON-LINE AUCTION WITH GOODIES TBA!

If YOU cut stones, have invented a tool, have a book or other unique jewelry supply that you would like to donate to our auction please get in touch!

We want to promote our members and would love you to participate!

Email our Fundraising Chair, Kiki Gerardo:

[kikig@pacbell.net](mailto:kikig@pacbell.net)

Watch your inbox, registration opens soon!

**MASSC Members \$20**  
**Non-Members \$40**



# Extras of Interest & Member Perks

## Schools & Classes

GRS Tools and Training Facility  
Professional and beginning stone setting,  
engraving, inlay and sculpting metal classes  
<https://grs.com/facility/> <https://grs.com/cost/>

Idyllwild Arts  
Summer Adult Metals Week Program  
Summer Native American Program  
[idyllwildarts.org](http://idyllwildarts.org)  
951-359-2171  
Idyllwild, CA

Little Metal Foxes  
**Extensive list of interactive online classes:**  
[info@littlemetalfoxes.com](mailto:info@littlemetalfoxes.com)  
Referral Program  
Seattle, WA

Metalwerx  
**Classes both online and in-person:**  
[info@Metalwerx.com](mailto:info@Metalwerx.com)  
781-891-3854  
Waltham, MA

Silvera Jewelry School  
**Free lectures monthly from artists**  
Extensive Zoom and in-person classes:  
[silverajewelry.com](http://silverajewelry.com)  
510-868-4908  
Berkeley, CA

### Classes from our members

Nohline L'Ecuyer  
**The Loft Jewelry Studio:**  
<https://www.theloftjewelrystudio.com>

Diane Weimer  
**Classes**  
<https://dianeweimer.com/workshops>

Erin Proctor  
**Ask about her private classes:**  
<http://www.saturn5studio.com>

## Box Workshop/Class

Join MASSC's very own Angelina Smith for this "pressing" workshop that will showcase the use of either a hydraulic press or a vice to construct a box with no soldering required!

**September 25th**

**10am-4pm**

**Presented online via Zoom!**

**Materials List will be provided**

**Kit includes a die of your choice and corresponding pattern!**

**\$60 for MASSC Members - \$75 for non-members**

**(Die kit is included in class fee!)**

Keep your eyes on your inbox! A sign-up email is coming!

## Upcoming Monthly Makers Challenge

### This month: September - Inlay

Inlay can be so many things and done with so many techniques, show us your talent by using rocks with metal, stone on stone, metal in metal, intarsia, Navajo inlay, wood and metal, channel setting, resin, mosaic, eggshell...the list is endless and only limited by your time and imagination...

### October - Ripples or Waves

Ripples across water, waves from the ocean, clouds in the sky, shadows rippling across the ground, reticulation, corrugation, form folding stacked metals, what do you think of with these words of motion? Additional inspiration for the theme see Ask Betsy, column talks about reticulation.

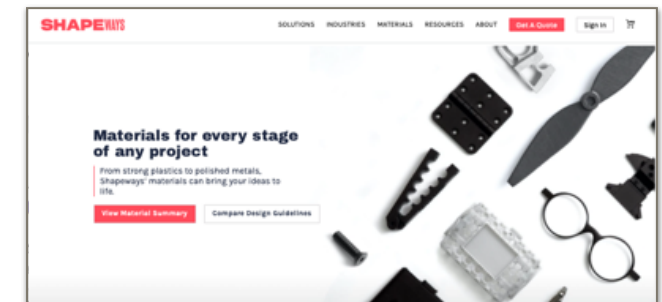
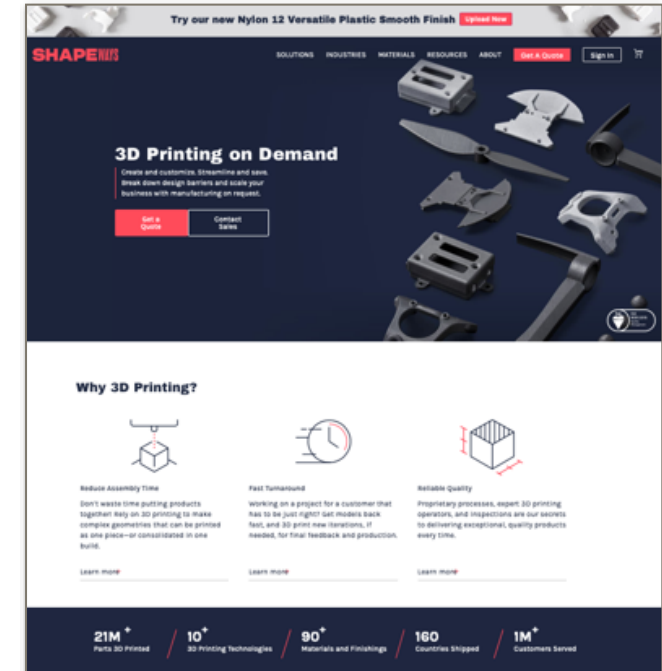
### November - Construct a Box

Have you always wanted to make a box, or a hinge? Now is your chance. You can fabricate it out of any metal, shape or technique. Are there creative ways to open the box lid, or the catch? We can't wait to see how innovative your box can be! Consider signing up for the September Box Workshop to learn a new way to make a box!

## Resources

## SHAPEWAYS

## 3D Printing on Demand



An extensive list of materials that are available for your file and also the following metals for your printed wax forms. Copper, Platinum, Gold, Silver, Bronze and Brass plus some plated ones.

[shapeways.com](https://shapeways.com)

## MASSC Board Members

**President: Angelina Smith**  
[massc.president@gmail.com](mailto:massc.president@gmail.com)

**Vice President, Program Chair: Ketarah Shaffer**  
[kbetarah.massc@gmail.com](mailto:kbetarah.massc@gmail.com)

**Vice President, Operations: Stella Schloss**  
[massc.vp.ops@gmail.com](mailto:massc.vp.ops@gmail.com)

**Secretary: Betsy Manheimer**  
[massc.secretary@gmail.com](mailto:massc.secretary@gmail.com)

**Treasurer: Needed**

## Members At Large

**Ashley Ryane Greer, MASSC Social Media**  
[social.massc@gmail.com](mailto:social.massc@gmail.com)

**Trish McAleer**  
[tmcaleer50@gmail.com](mailto:tmcaleer50@gmail.com)

**Erin Proctor, Newsletter Editor**  
[massc.editor@gmail.com](mailto:massc.editor@gmail.com)

**Membership Chair: Tigre Sheets**  
[tigre.massc@gmail.com](mailto:tigre.massc@gmail.com)

**Fundraising Chair: Kiki Gerardo**  
[kikig@pacbell.net](mailto:kikig@pacbell.net)

## Contributors

Bill Gallagher

Virginia (Ginny) Hyatt

Ruth Kaplan

Betsy Manheimer

Erin Proctor

Trudy Adler

2Roses

Jean Vormelker



Editing supervised by  
 Furrdinand

## Membership

### Become a member

If you're joining us for the first time, then hooray! We can't wait to share all of our exciting events with you this year!

Learn all about your member benefits and register here!

Membership is good from the date you register until December 31, 2021.

### Here are some reasons to think about joining:

If you bought a Metals Challenge Box you MUST be a current member to enter a piece into the competition!

- Receive Members Only access to Video Library!
- Special pricing on MASSC sponsored workshops & access to Members Only classes and events like the Jewelry District Vendor Tour (online this year)

### Membership Dues for 2021

**Individual \$50**

**Dual \$70**

**Student \$30**

You can also sponsor a student! [Visit website](#) for details.

## Thank you to our sponsors

**2Roses**

<https://2roses.com>

**All Craft USA**

<https://www.allcraftusa.com>

**A to Z Jewelry Tools**

<https://atoztoolsonline.com>

**JoolTool**

<https://jooltool.com>

**NC Black**

<https://www.ncblack.com>

**Rio Grande Jewelry**

<https://www.riogrande.com>

**Brad Smith**

<http://www.bradsmithjewelry.com>

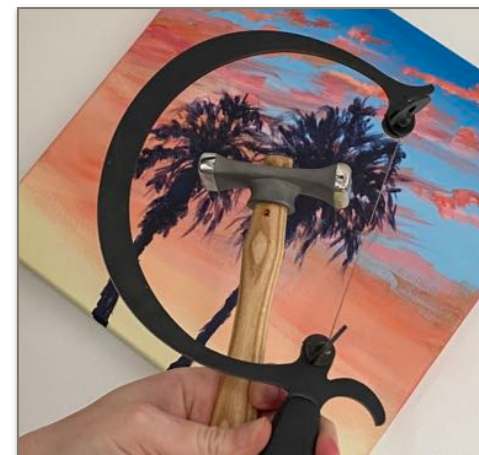
## CALL FOR TEACHERS!

We know we have been unable to offer in-person classes, but still want to make classes available to our members.

Would you like to teach a technique or have a fun project to share and have the ability to teach Zoom classes?

Send us your topic and availability for us to review to help us organize a robust class schedule!

Contact: [massc.vp@gmail.com](mailto:massc.vp@gmail.com)



### Any member can contribute to this newsletter:

- Always looking for your tips and or techniques in any of your process to creating your pieces.
- Photos of your work can be featured in our MASSC Member Gallery. For that—looking for 3 to 4 photos of a collection that works together.
- If you have any questions, reach out and we can help you.

[massc.editor@gmail.com](mailto:massc.editor@gmail.com)